

KGR - Aboriginal Connection to Country



**Ku-ring-gai
GeoRegion**

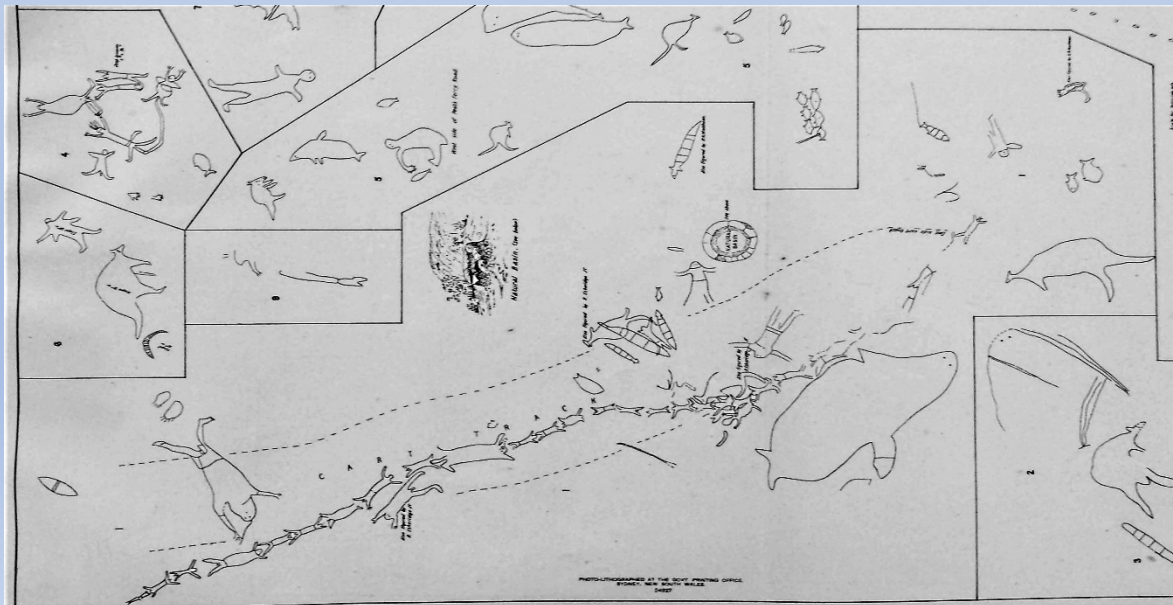


Aboriginal Country – Coal and Candle Creek Catchment

Bob Conroy

Presentation to STEP Inc., Mar 2023

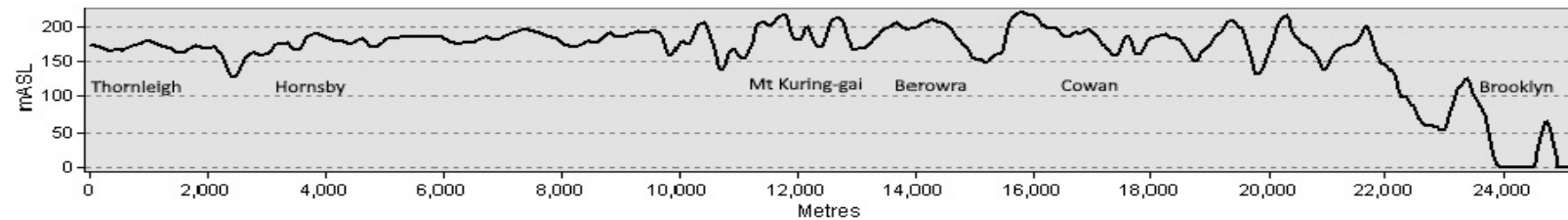
KGR - Aboriginal Connection to Country - Introduction



KGR - Aboriginal Connection to Country - Topography

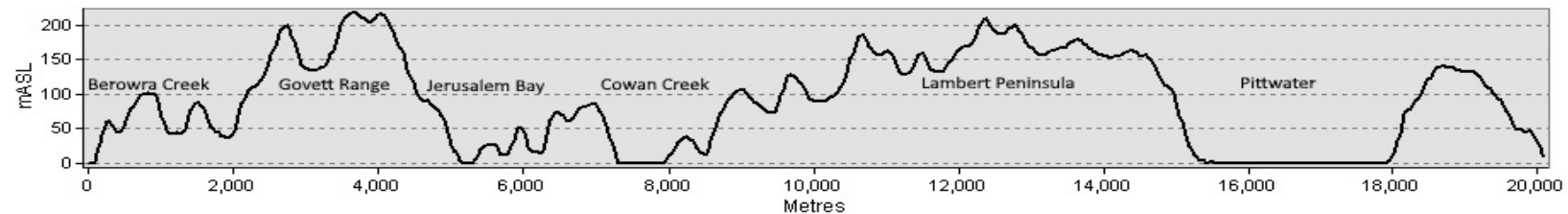


Elevation Profile A1 - A2



Ku-ring-gai Georegion (Area of Interest)

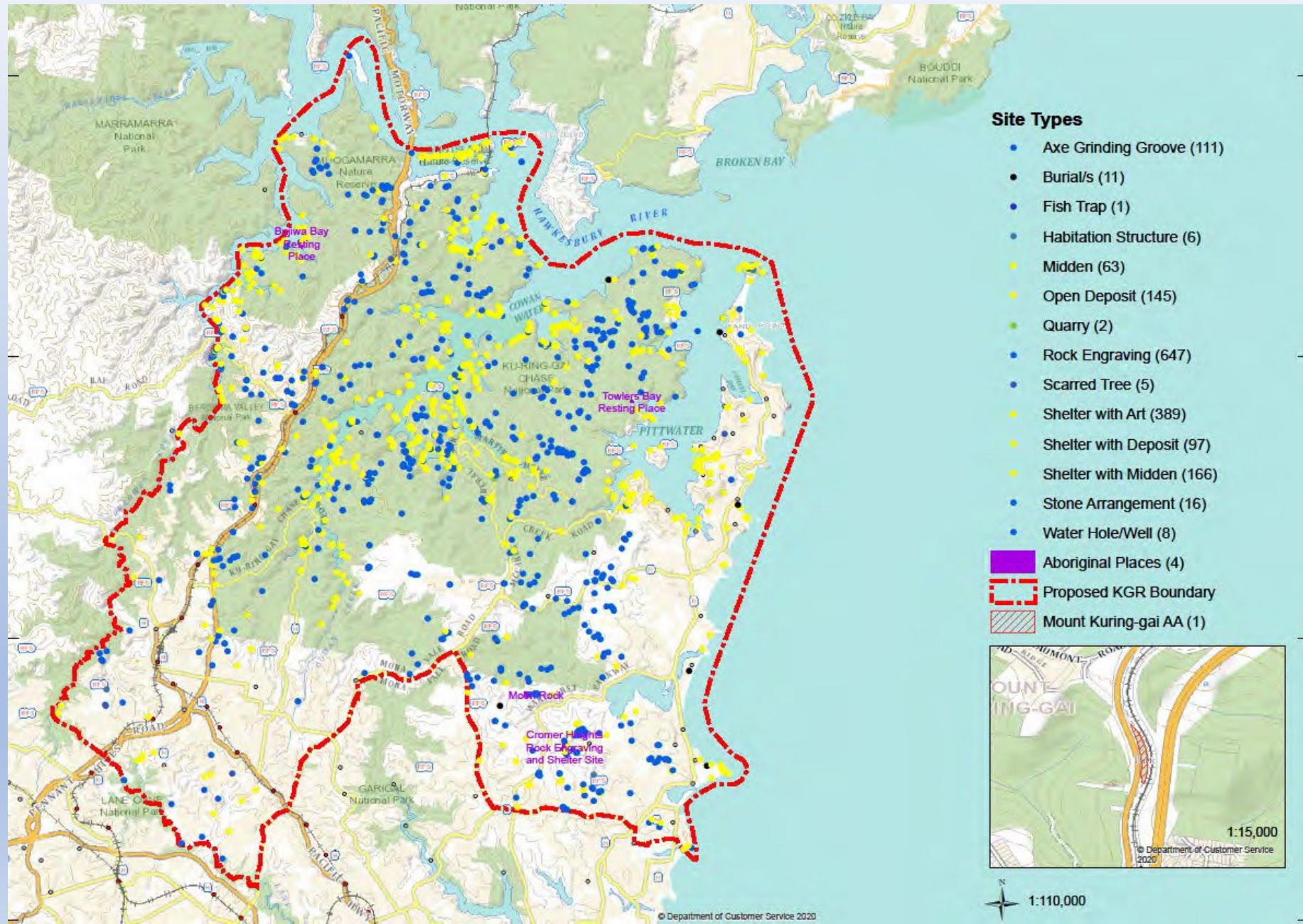
Elevation Profile B1 - B2



Ku-ring-gai Georegion (Area of Interest)

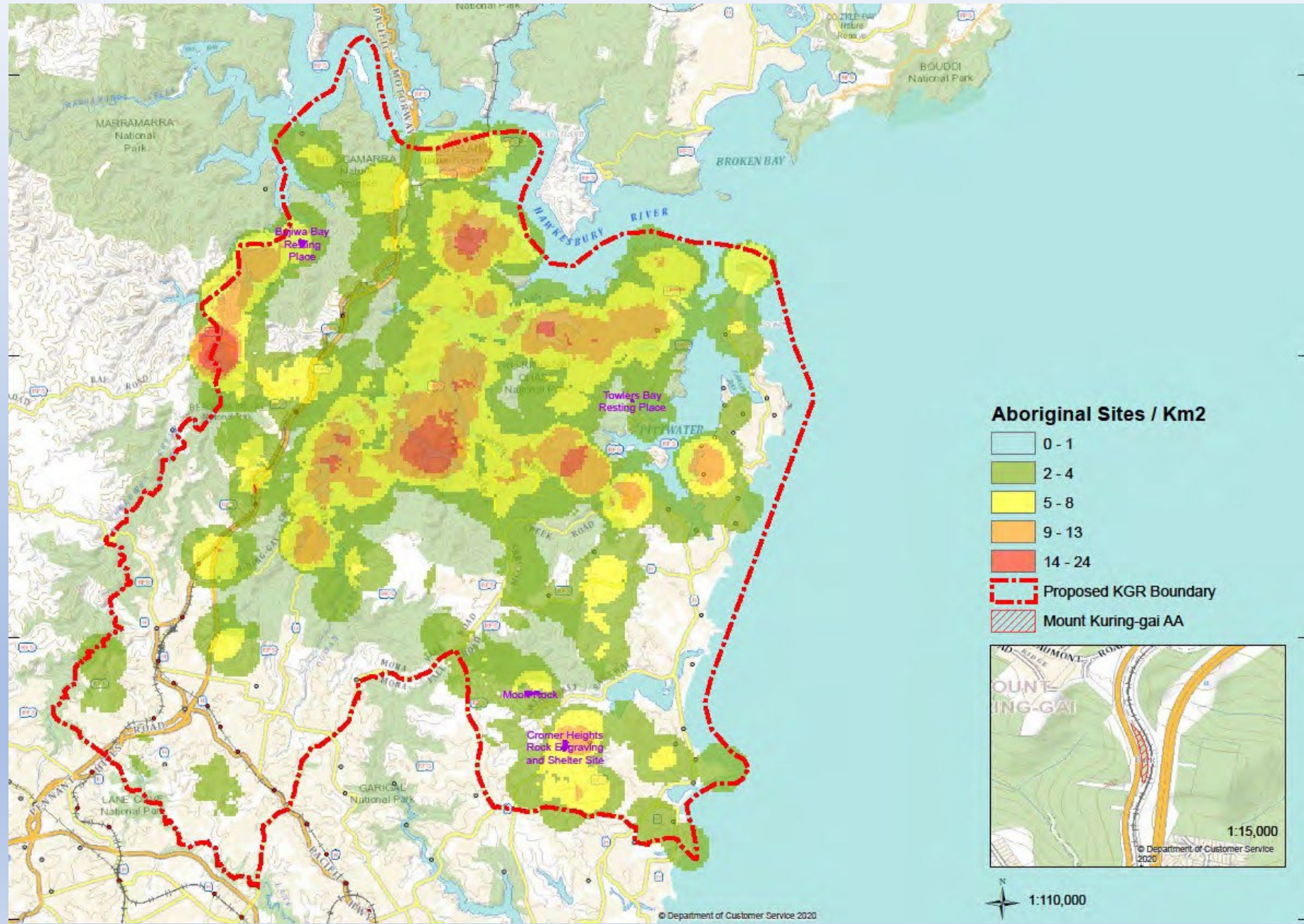
KGR - Aboriginal Connection to Country – AHIMS Records

Ku-ring-gai
GeoRegion



KGR - Aboriginal Connection to Country – Site Density

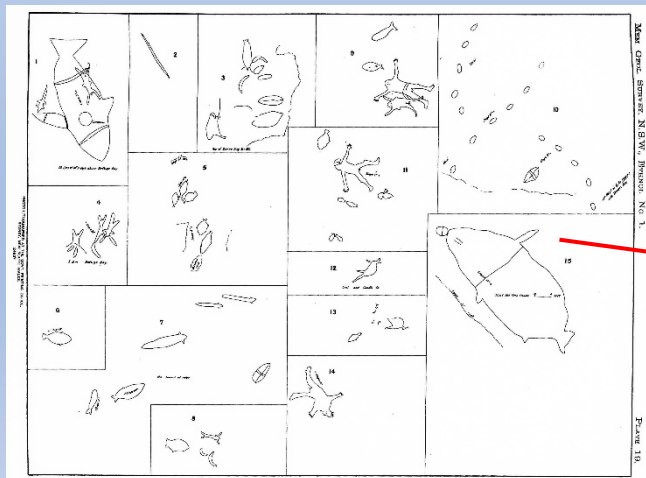
Ku-ring-gai
GeoRegion



KGR - Aboriginal Connection to Country - Data

Ku-ring-gai GeoRegion	Number of Types		Number in Protected Areas		Elevation mASL		Slope Degrees		Distance to Freshwater (m)		Distance to Estuary/Coast (m)	
	No.	% of Total	No.	% of Total	Average	SD	Average	SD	Average	SD	Average	SD
Rock Engraving	647	38.8%	434	67.1%	120	57	8	6	229	176	815	640
Shelter with Art	389	23.3%	300	77.1%	61	59	16	8	231	215	376	599
Shelter with Midden	166	10.0%	133	80.1%	33	29	16	7	252	258	103	229
Open Deposit	145	8.7%	79	54.5%	27	43	13	7	338	351	126	316
Axe Grinding Groove	111	6.7%	66	59.5%	121	56	9	6	155	165	902	623
Shelter with Deposit	97	5.8%	45	46.4%	57	56	12	7	379	381	513	864
Midden	63	3.8%	37	58.7%	24	36	13	7	376	391	119	297
Stone Arrangement	16	1.0%	11	68.8%	142	24	8	5	137	75	734	489
Burial	11	0.7%	4	36.4%	22	35	11	11	540	456	166	386
Water Hole/Well	8	0.5%	4	50.0%	102	59	8	5	160	181	971	725
Habitation Structure	6	0.4%	3	50.0%	111	46	13	4	630	826	1023	697
Scarred Tree	5	0.3%	0	0.0%	149	41	8	4	286	102	1541	781
Quarry	2	0.1%	1	50.0%	138	33	5	2	399	18	433	145
Fish Trap	1	0.1%	1	100.0%	15	0	5	0	31	0	22	0
Total of Site Types	1667	100.0%	1118	67.1%	82	65	12	8	253	254	541	656

Ku-ring-gai
GeoRegion



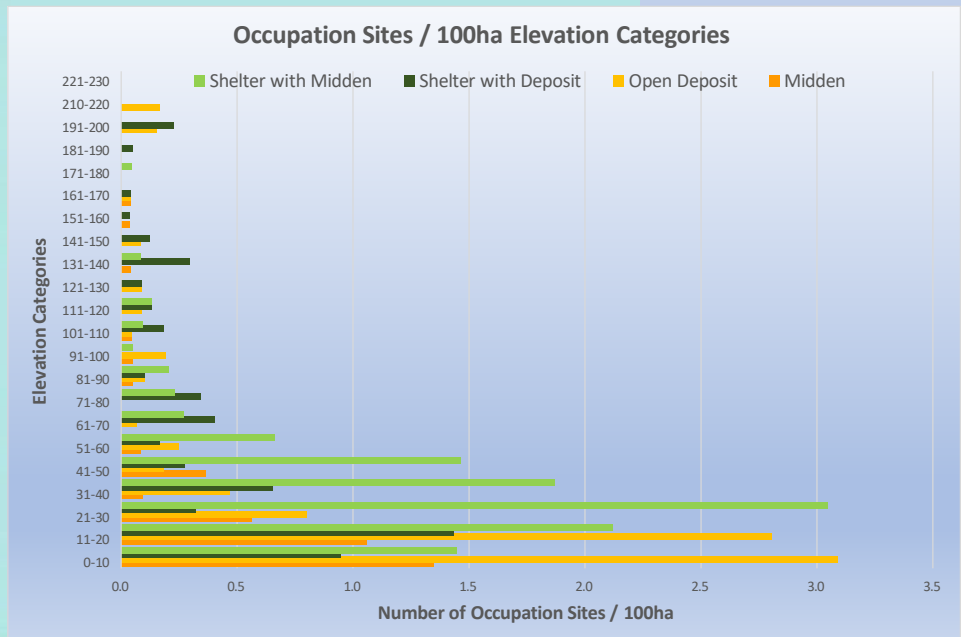
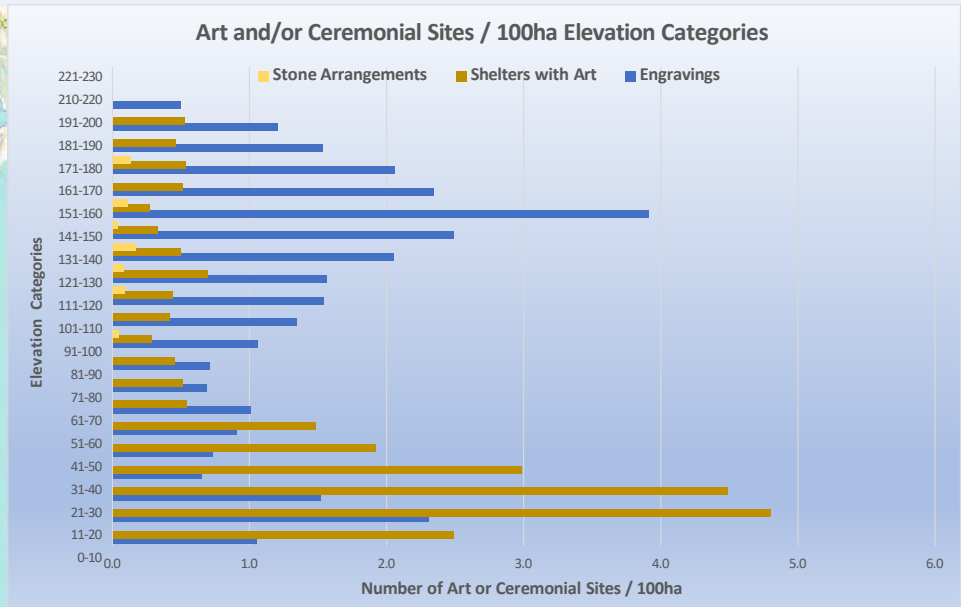
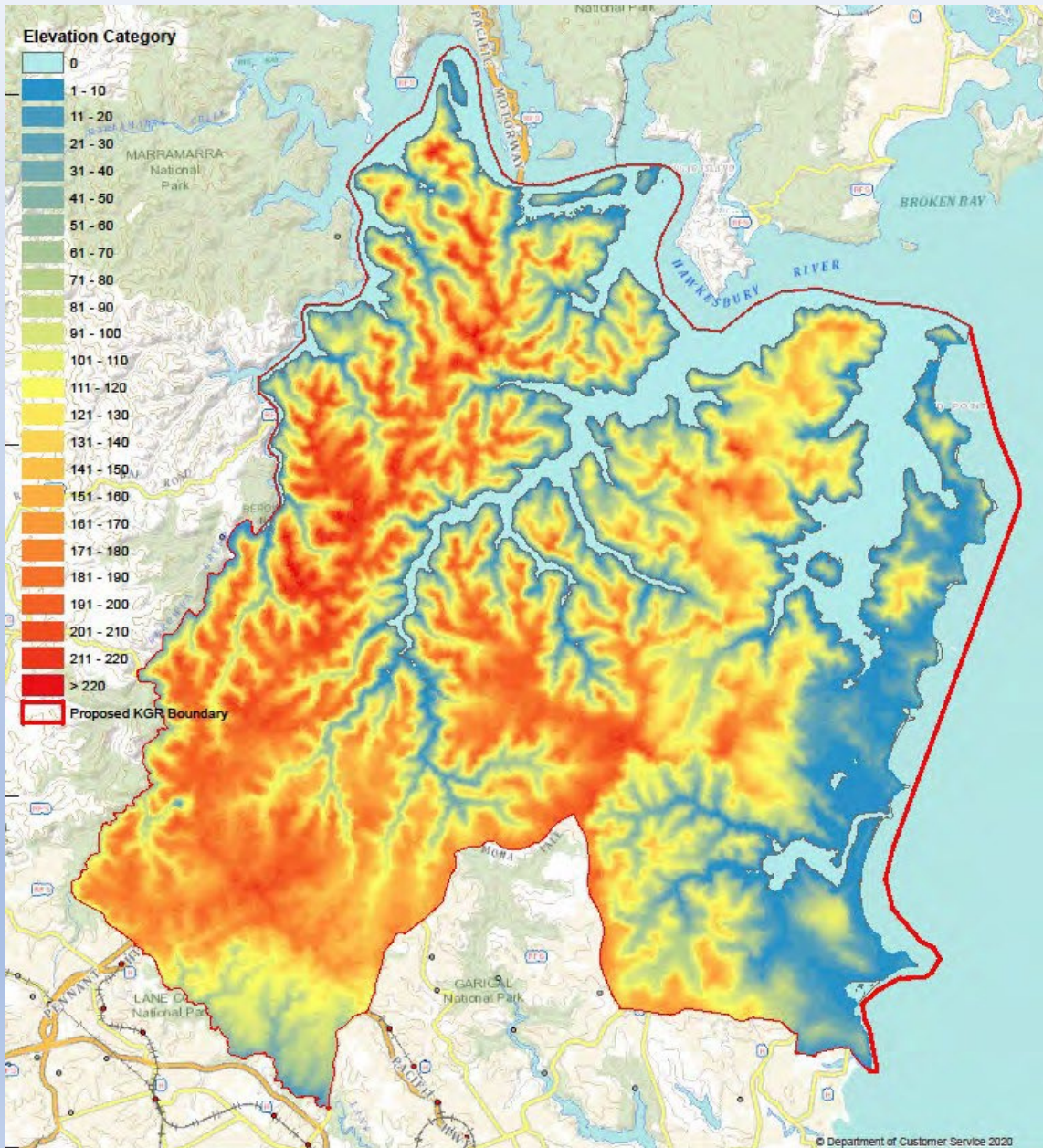
Campbell 1899 Plate XIX



Whale and other figures Waratah Trail, KCNP

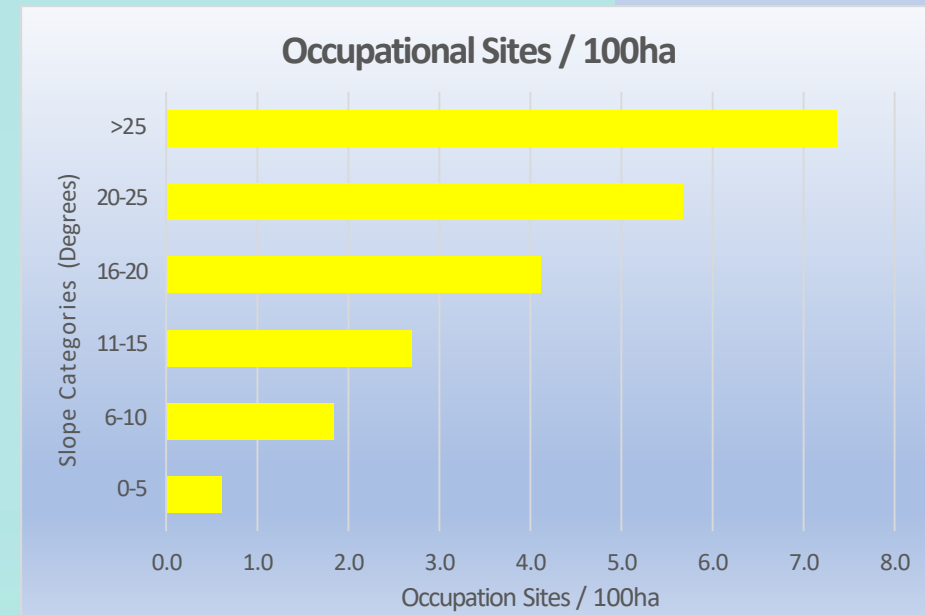
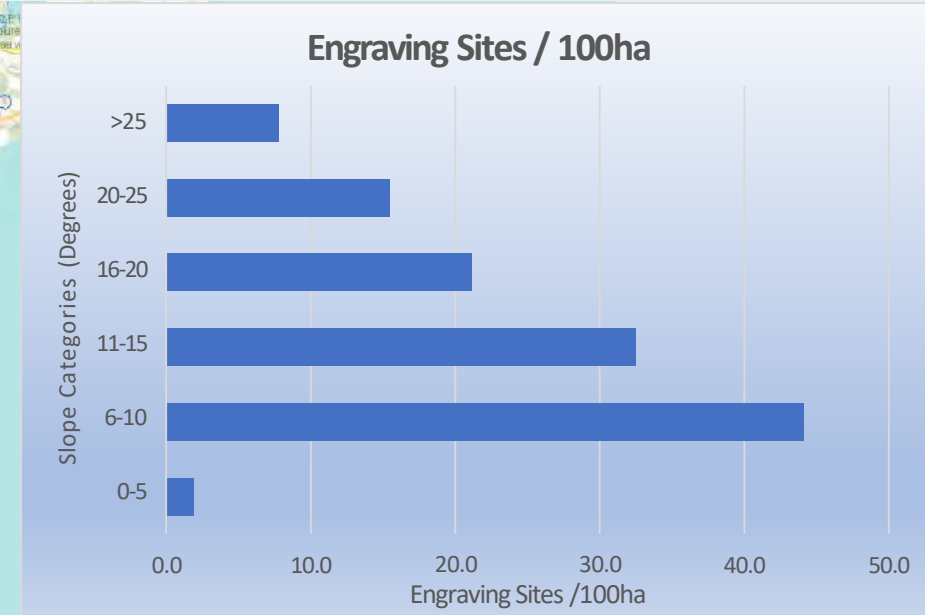
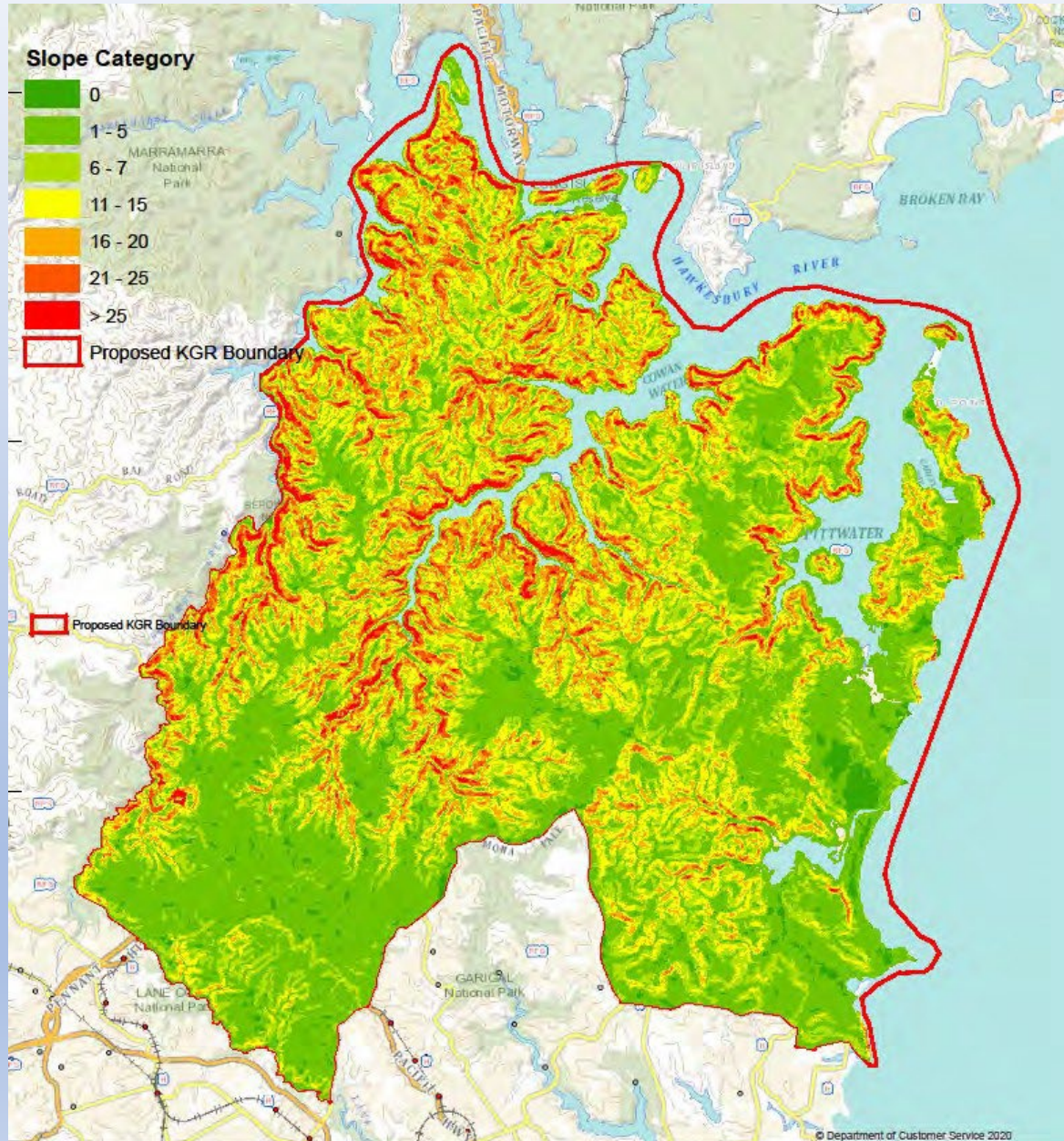
KGR - Aboriginal Connection to Country - Elevation

Ku-ring-gai
GeoRegion



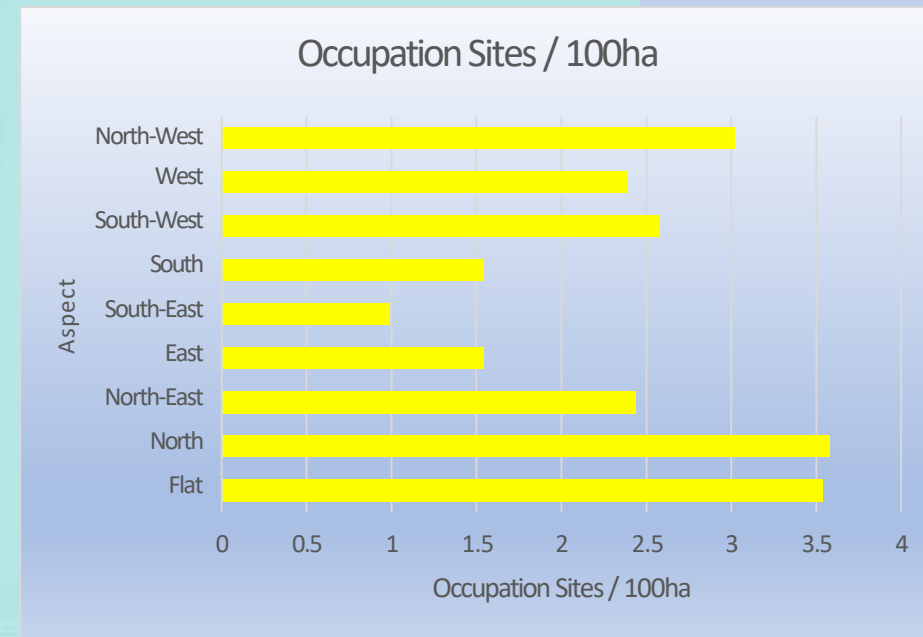
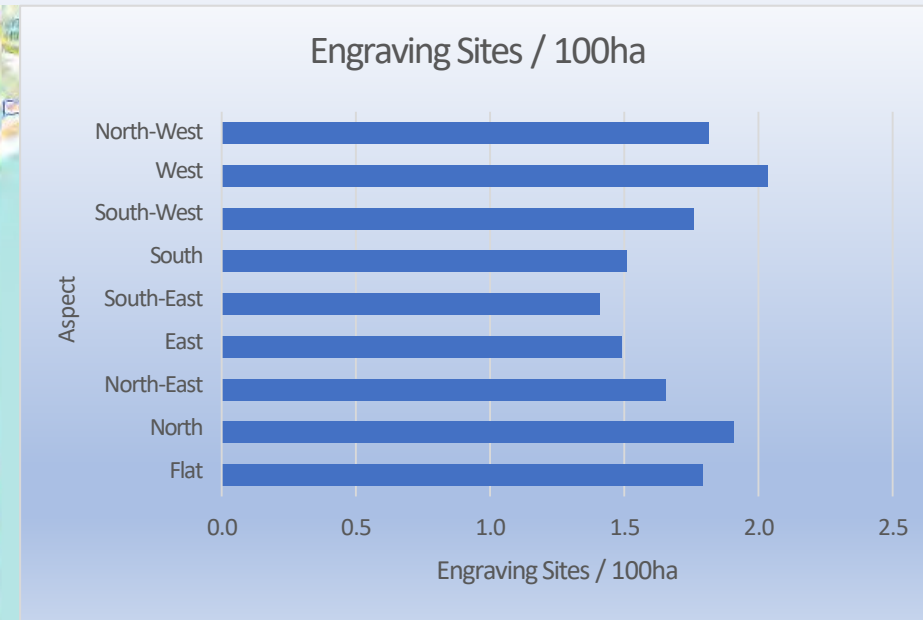
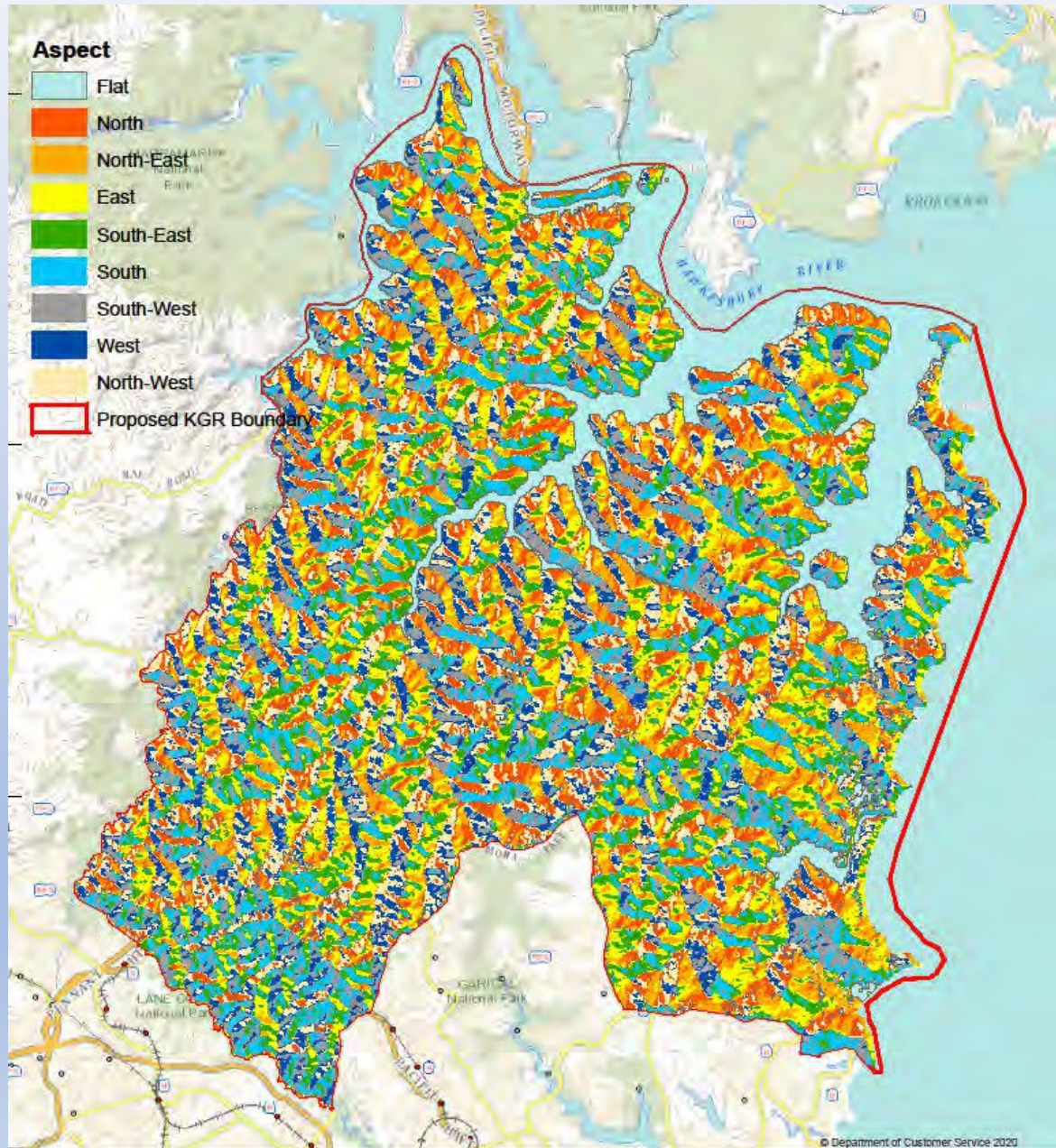
KGR - Aboriginal Connection to Country - Slope

Ku-ring-gai
GeoRegion



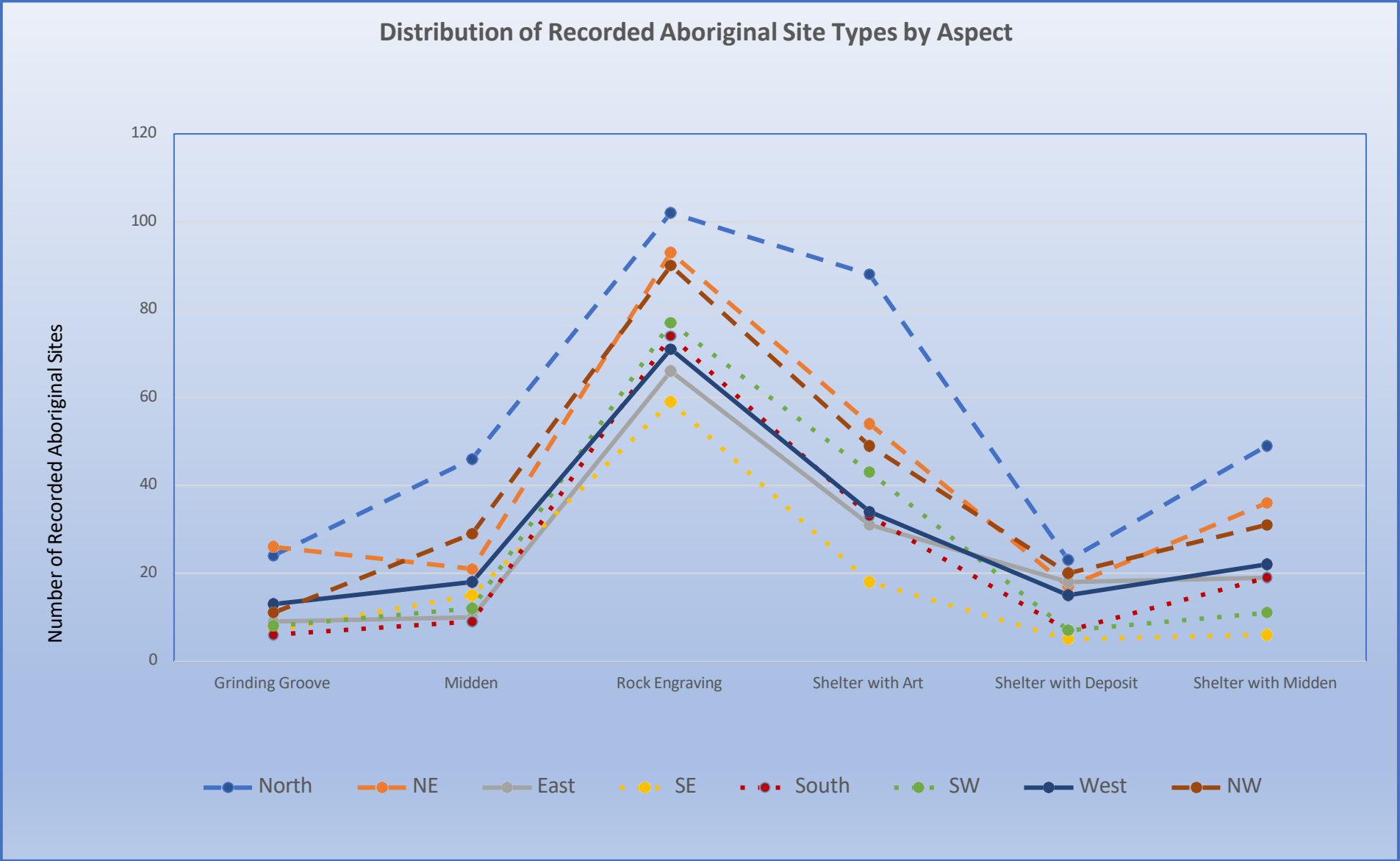
KGR - Aboriginal Connection to Country - Aspect

Ku-ring-gai
GeoRegion





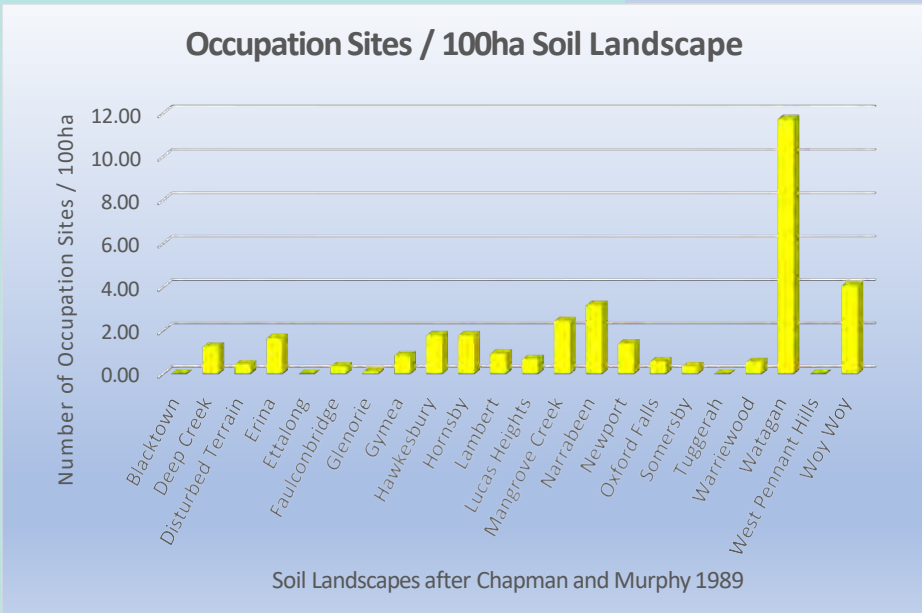
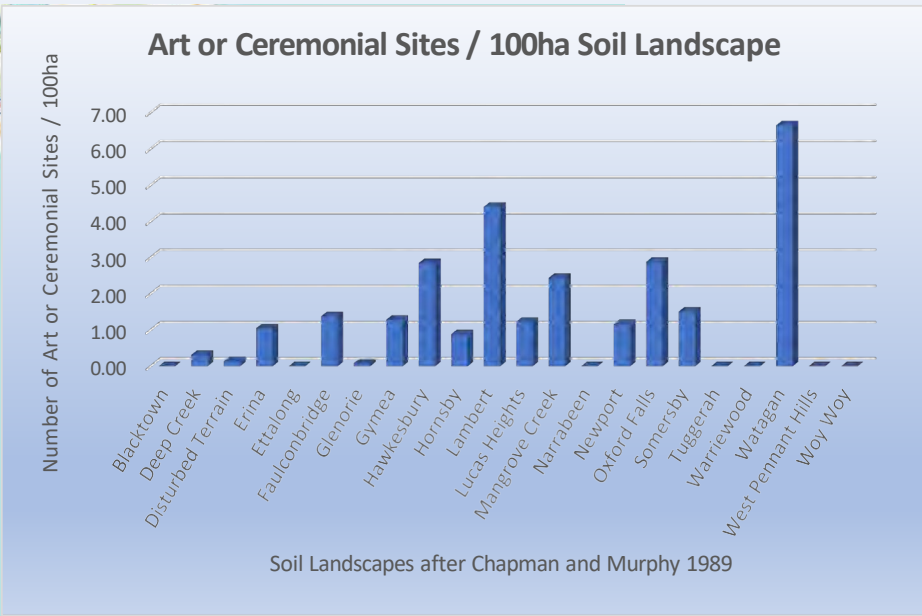
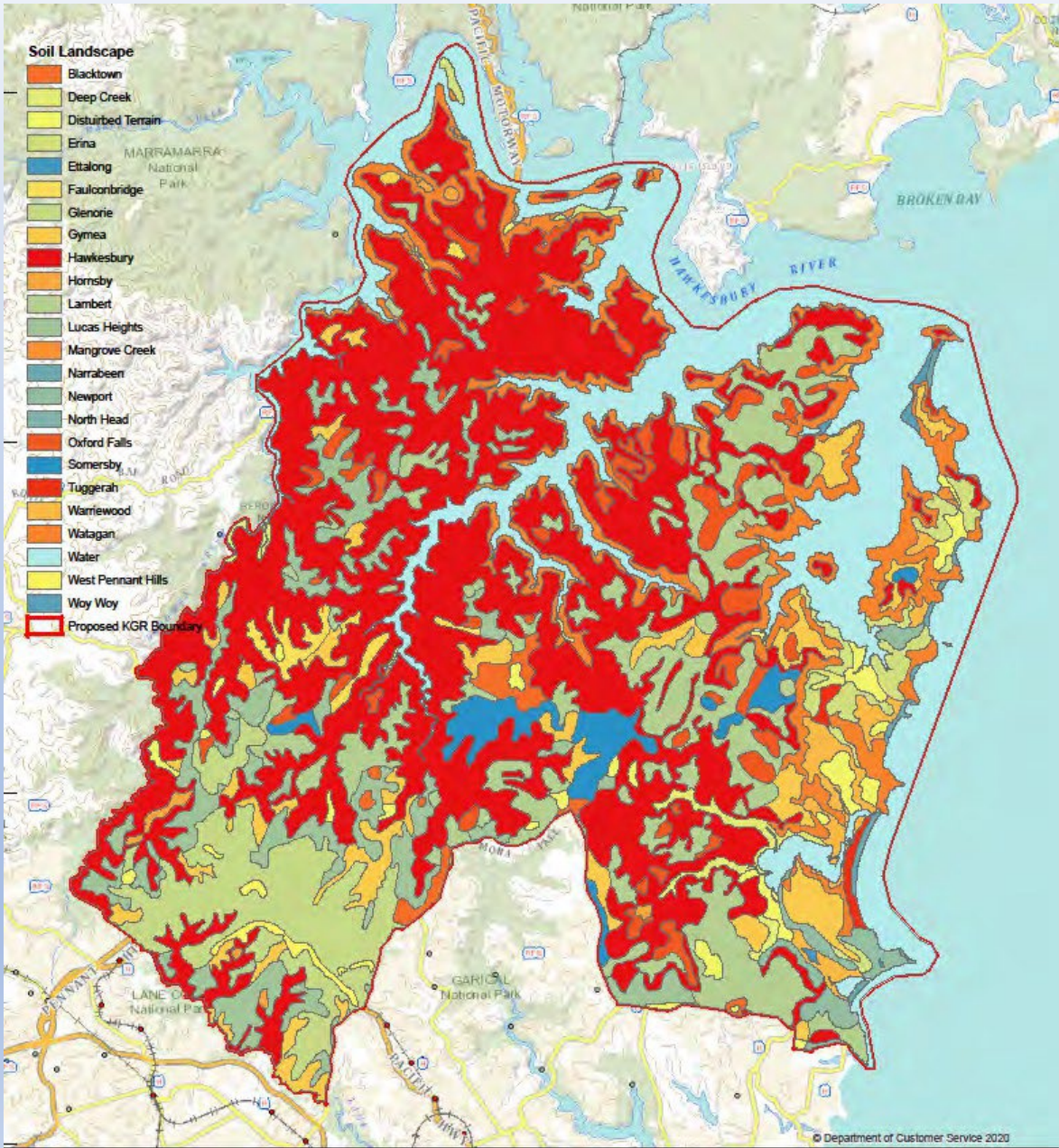
KGR - Aboriginal Connection to Country - Aspect



KGR - Aboriginal Connection to Country – Soil Landscapes



Ku-ring-gai
GeoRegion



KGR - Aboriginal Connection to Country



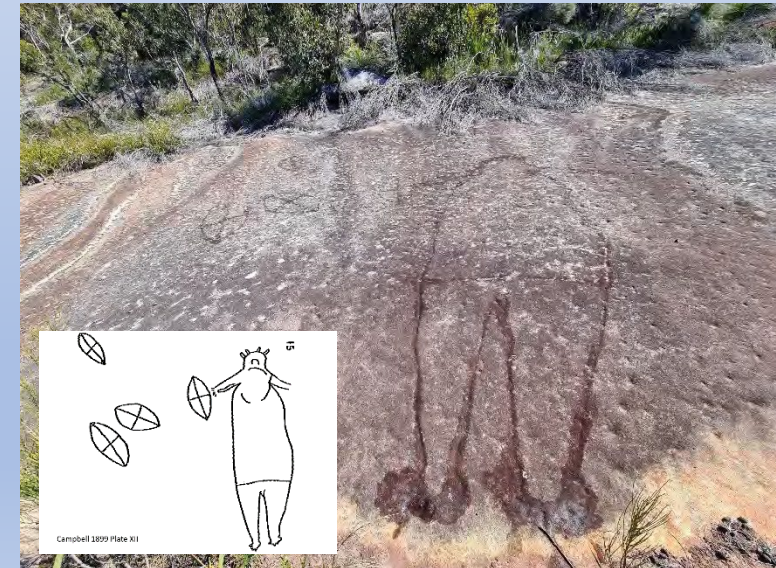
A large engraved motif of Daramulan above Cowan Creek



Unusual 4-legged kangaroo engraving, The Basin Catchment



Mt Ku-ring-gai AA – Engraving of Baiaame and other figures



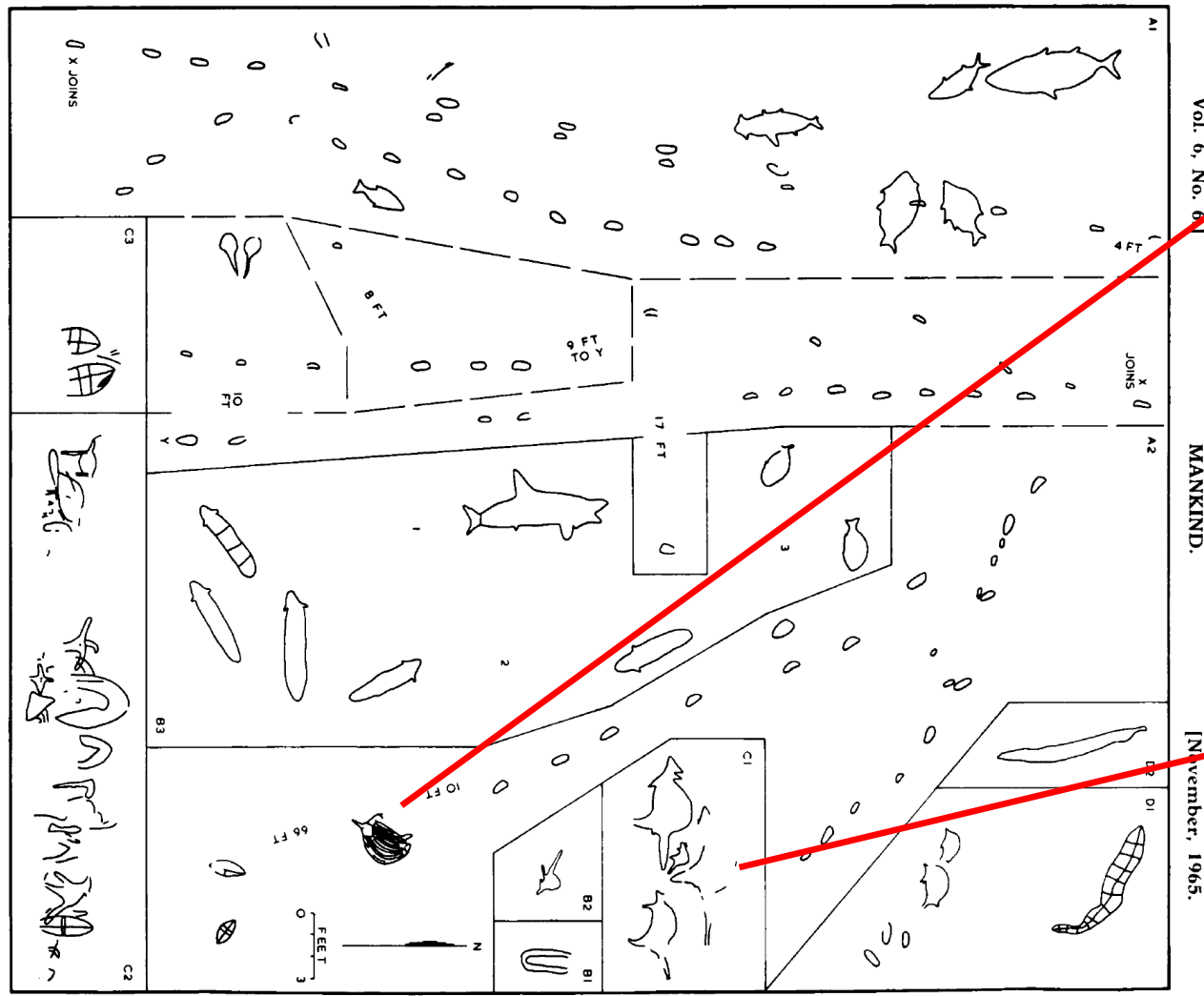
Spiritual figure, with shields at Taber Trig, KCNP

**Ku-ring-gai
GeoRegion**

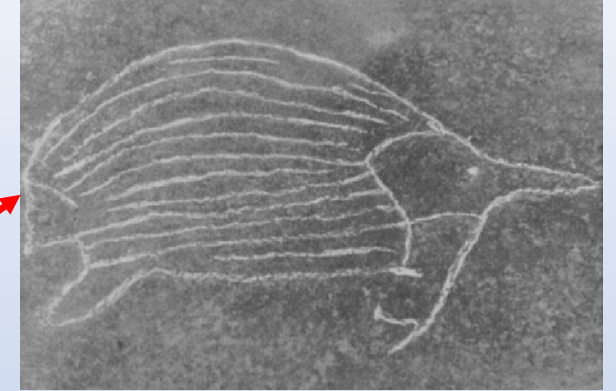
KGR - Aboriginal Connection to Country



Ku-ring-gai
GeoRegion



Rock engravings. West Head KCNP
(Sim, 1965)



KGR - Aboriginal Connection to Country



**Ku-ring-gai
GeoRegion**



Vertical flounder and wallaby engravings, just north of Yeomans Bay, KCNP (Photo: S. Cohen NPWS, 2014)

KGR - Aboriginal Connection to Country



Near the Duckholes, McCarrs Creek in Ku-ring-gai Chase NP



East Apple Tree Bay, Ku-ring-gai Chase NP



Smiths Creek KCNP

KGR - Aboriginal Connection to Country



**Ku-ring-gai
GeoRegion**



Shelter near Great Mackerel Beach



Shelter near West Head Beach



Little Emus Shelter, West Head



Shelter near Hallet's Beach

KGR - Aboriginal Connection to Country



**Ku-ring-gai
GeoRegion**



Duffys Wharf, KCNP



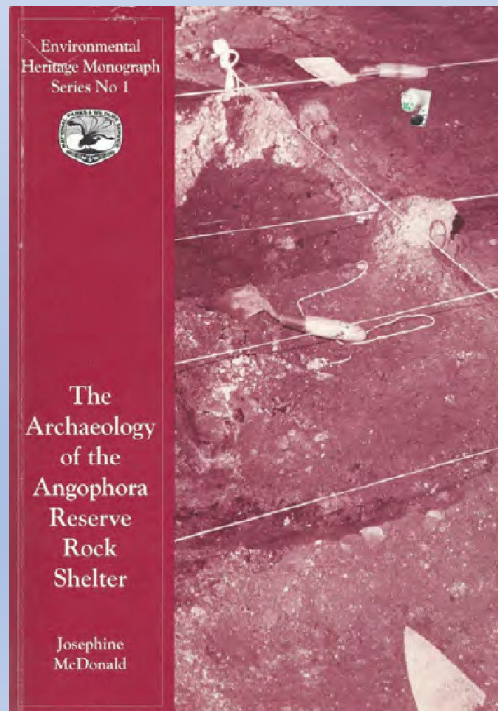
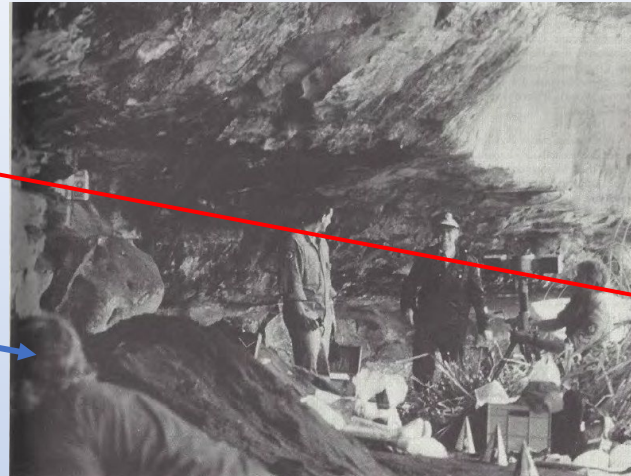
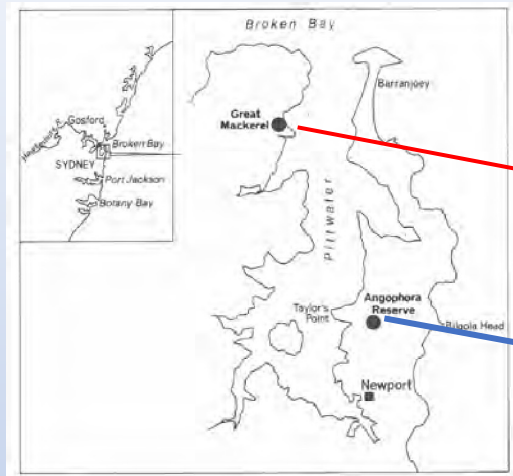
Areal Extent of the Duffys Wharf Open Midden



The Basin Lagoon, KCNP



KGR - Aboriginal Connection to Country



Above images from McDonald 1992.

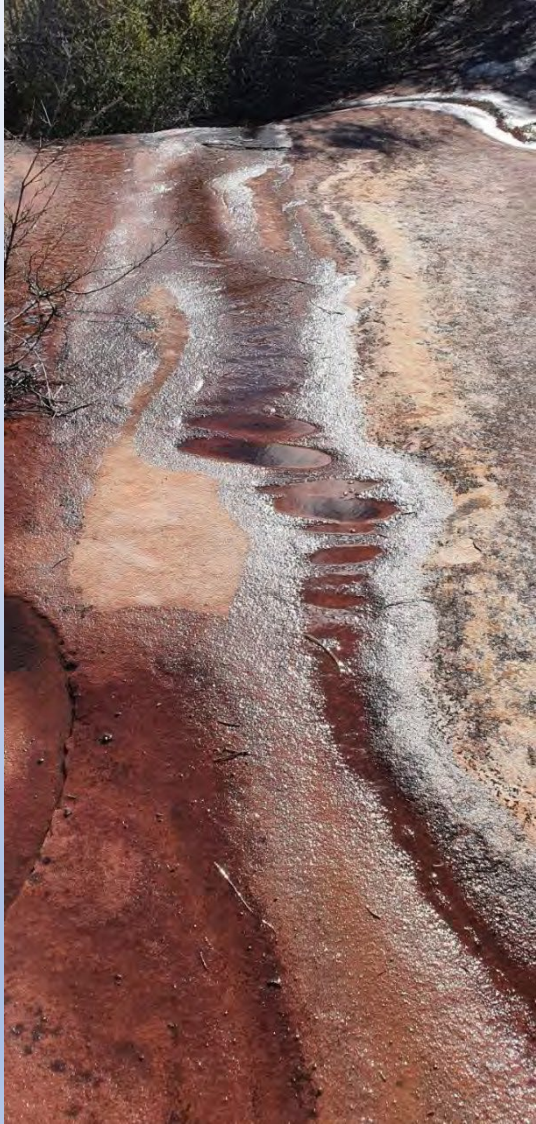


Above images from McDonald 2008

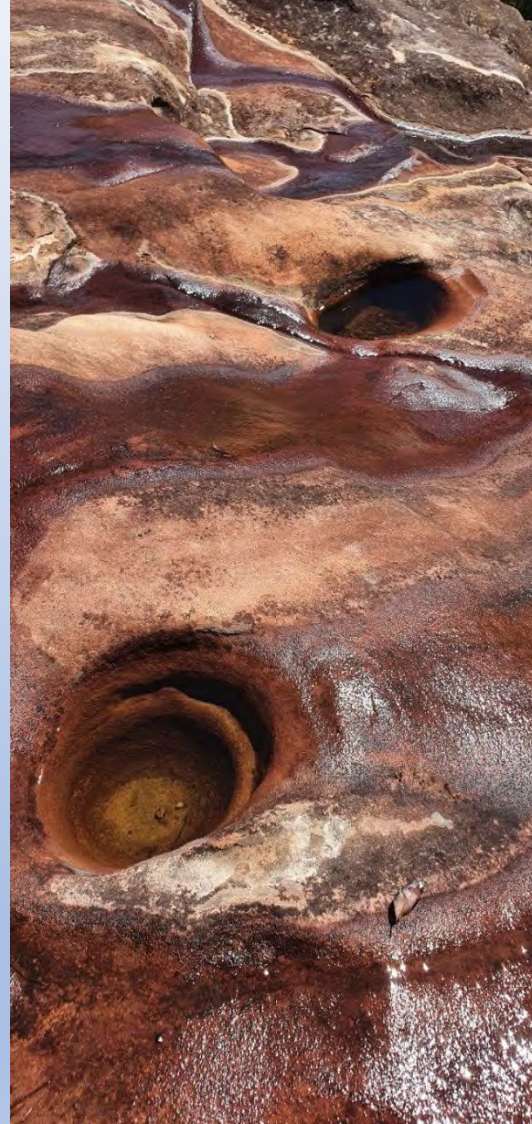
KGR - Aboriginal Connection to Country



**Ku-ring-gai
GeoRegion**



Grinding grooves, Salvation Creek Catchment KCNP



Gnammas and grinding grooves, Waratah Trail KCNP



Channel and grinding groove, Salvation Creek Catchment KCNP

KGR - Aboriginal Connection to Country



**Ku-ring-gai
GeoRegion**



Kariong



Moon Rock



Mackerel Trail, Ku-ring-gai Chase NP.



The Basin above Granite Cave

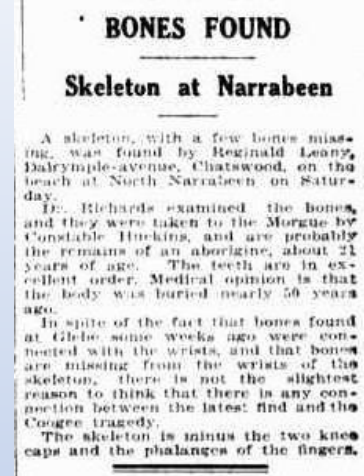
KGR - Aboriginal Connection to Country



Ku-ring-gai
GeoRegion



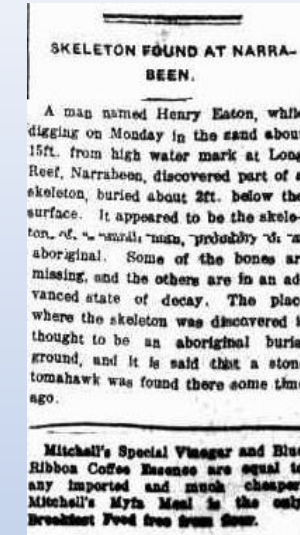
Macey, Richard (26 November 2005). ["Bus stop an execution site ... 1500 years ago"](#). *Sydney Morning Herald*.



Sun, Monday 24 September 1923, p.9



Daily Telegraph, Monday 3 August 1936, p.1



Moree Gwydir Examiner and General Advertiser, Friday 12 April 1918, p.4



Sydney Morning Herald Monday 18 June 1945, p.3

KGR - Aboriginal Connection to Country



Possible scar trees (unrecorded as such) near West Head, KCNP

KGR - Aboriginal Connection to Country

Threats

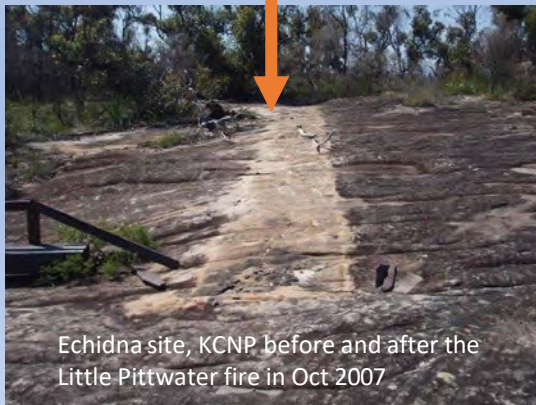
- Inappropriate fire regimes
- Vegetation encroachment
- Chemical weathering
- Development
- Recreational activities
- Vandalism



**Ku-ring-gai
GeoRegion**



Before



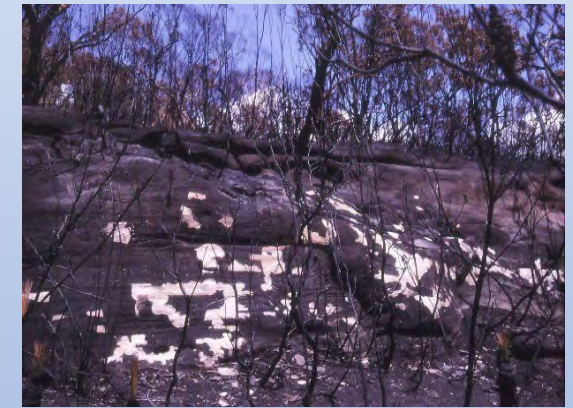
Echidna site, KCNP before and after the Little Pittwater fire in Oct 2007



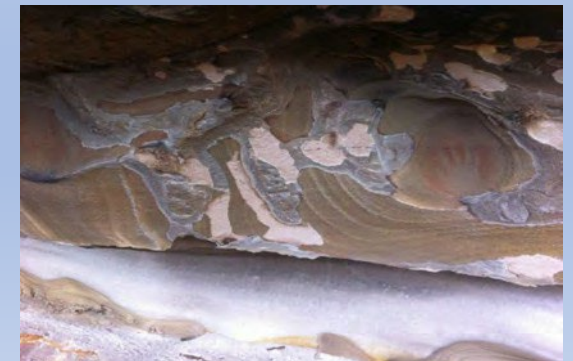
Vehicle tracks across engraving site, Waratah Trail, KCNP.



Ingleside Wallaby 2 - MTB Damage



Exfoliation of sandstone after fire



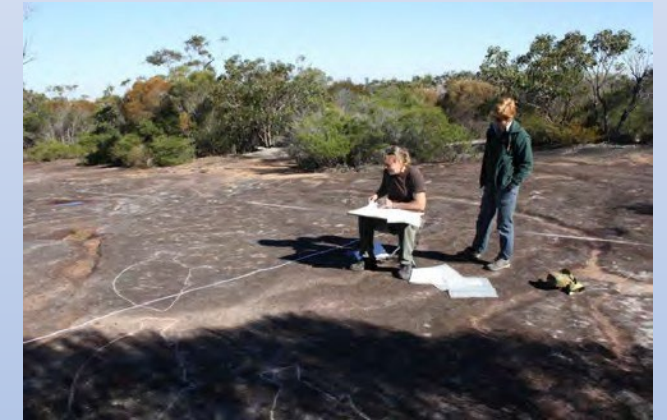
Shelter with art, near Topham Trig KCNP.

KGR - Aboriginal Connection to Country

Management Options

- Education and interpretation
- Statutory protection e.g. Aboriginal place declaration, LEPs, proposed national heritage listing of the 'Sydney Cultural Crescent Rock Art'; Bushfire EA Code
- Interventions such as removing graffiti, litter, lichen and overhanging branches; pest control
- Regulating access; appointing and training caretakers; adding and updating site information in AHIMS
- Supervised and culturally appropriate highlighting

Ku-ring-gai
GeoRegion



Photos courtesy from Eric Keidge, NPWS

Thank you

NSW National Parks and Wildlife Service – especially Eric Keidge, Tegan Burton, Steve Chapple

Aboriginal Heritage Office: <https://www.aboriginalheritage.org/>

Aboriginal Support Group Manly Warringah Pittwater: <https://asgmwp.net/>

Guringai Tribal Link Aboriginal Corporation - PO Box 4061, Wyongah NSW 2259

Metropolitan Local Aboriginal Land Council: <https://metrolalc.org.au/>



**Ku-ring-gai
GeoRegion**